

## IN MEMORIAM

SATISH K. SETH, MD  
1/15/1938 - 9/10/2010



4428 SECOR RD. TOLEDO, OH 43623  
419.473.3200 FAX 419.475.6744

NONPROFIT  
ORGANIZATION  
U.S. POSTAGE  
PAID  
TOLEDO, OH  
PERMIT NO. 416

## Happy Thanksgiving!



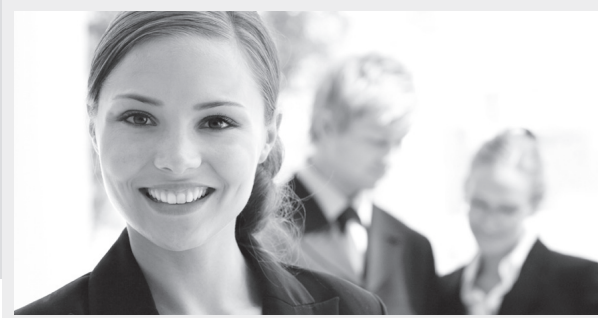
## CLASSIFIED AD

**Office Furniture for Sale -**  
6 full-size computer  
work stations, 1 large  
wooden table with 2  
drawers, and computer  
desk. \$30.00 each or  
\$200.00 for all. Also,  
fax machine for \$35.00.  
**Please call Lee Wealton**  
**@419.473.3206** or  
**e-mail @ lwealton@**  
**aol.com.**

CURRENT RESIDENT OR:

COMMUNIQUE is published monthly. All contributing information is due by the first of each month. Send information via email to Joey Begeman @ joey.begeman@gmail.com. Questions? **PHONE 419.471.3210 FAX 419.475.6744.**

Your patients trust you with their personal health.  
**Count on us**  
**to nurture your financial well-being.**



Our team of CPA healthcare business specialists represents the largest number of multi-physician practices in NW Ohio—giving us the clear advantage for helping you develop financial and business strategies, tax savings options, and retirement and estate plans to help you get to where you want to be in life.

To understand why our clients appreciate the work we do, call us today.

**WILLIAM VAUGHAN**  
**COMPANY**

Certified Public Accountants & Business Consultants

**(419) 891-1040 • 1-800-267-0930**

**WWW.WVCO.COM**



# COMMUNIQUE



OCTOBER/NOVEMBER 2010

## We NEED Your Email Address!

In order to provide the most timely information to it's members, The Academy of Medicine would like to communicate with the membership by email. Please provide your email address to The Academy by email at [lwealton@aol.com](mailto:lwealton@aol.com). Thank you in advance for providing The Academy with your email address.

## Academy of Medicine Annual Meeting

Please mark your calendar now and plan to attend The Academy of Medicine Annual Meeting on Thursday, January 13, 2011, at Gladieux Meadows. The reception will begin at 6:00 pm, followed by dinner and the program. At the Annual Meeting, Dr. Salvador E. Peron, 2010 Academy President, will install Dr. William H. Treuhft as 2011 Academy President. Formal invitations will be mailed with the ballots in early December. Ballot information will also be in the Autumn issue of *Toledo Medicine*. All Academy members are encouraged to invite a non member to be your guest at the Annual Meeting.

## Academy/Hospital Joint Meeting

Mercy St. Anne Hospital provided a wonderful venue and program for the 2010 Academy/Hospital Joint Meeting on September 14. The keynote speaker for the meeting, which was held at the hospital, was Dr. J. James Rohack, Immediate Past President of the American Medical Association. If you would like an electronic copy of Dr. Rohack's power point presentation, please contact Andrea Smith, Manager, St. Anne Medical Staff Services, at [andrea\\_smith@mhsnr.org](mailto:andrea_smith@mhsnr.org).

## Get Involved with Your Academy

If you would like to become more involved with The Academy of Medicine, please ask to be appointed to a commission or committee. Appointments will be made at the January Council Meeting. Vacancies will be available on the five commissions, including Community Relations & Communications, Judicial & Internal Affairs, Membership Services, Education & Professional Affairs and Community Health. There will also be vacancies on the Mediation Committee. If you have any questions or if you would like to volunteer to be on a commission or committee, please contact Lee Wealton at 419-473-3206 or by email at [lwealton@aol.com](mailto:lwealton@aol.com).

## Academy Mentorship Program

In 2006, the Academy Mentorship Program was formed to offer support to local pre-med students. One of the most fun and challenging parts of the program is a one on one mentoring relationship with a pre-med student. The Academy continues to recruit potential mentors for the program. If you have an interest in the program and would like a mentor sign-up form, please call The Academy Executive Office at 419/471-3333 or email your request to [lwealton@aol.com](mailto:lwealton@aol.com).

## Know your options: Medicare Participation Guide

From mid-November through December 31, physicians will have their annual opportunity to review and perhaps change their participation status with the Medicare program. Given the severe Medicare payment disruptions caused this year as Congress established, and then missed, multiple deadlines to stop payment cuts caused by the sustainable growth rate (SGR) formula, the AMA is encouraging physicians to prepare for this opportunity and review their options carefully. To help them choose the direction that is right for their practices, the AMA has developed the "Know your options: Medicare participation guide." This kit contains a detailed explanation of the three available options: participation (PAR), non-participation (non-PAR), and private contracting. It also includes a helpful revenue calculator and various sample materials to help physicians share information with current, new and prospective patients. The Medicare options kit is accessible to all physicians on-line at [www.ama-assn.org/go/medicareoptions](http://www.ama-assn.org/go/medicareoptions).

## INSIDE

Annual Meeting Host Committee.....	2
AMA Membership Dues 2011.....	2
Healthy Living News.....	2
EHR Assistance Available.....	3
Send Holiday Greetings to Your Colleagues.....	3
In Memoriam.....	4
Classified Ad.....	4

## Annual Meeting Host Committee

To assure the January 13, 2011 Academy Annual Meeting is a special experience for its new Associate Members being recognized that evening, The Academy is forming a Host Committee to welcome them to the event. All Academy members are eligible to serve on the Host Committee.

Host Committee members will do the following:

- \* Contact an assigned new Associate Member to invite and confirm attendance at the Annual Meeting.
- \* Accompany the Associate Member in a receiving line at the start of the Annual Meeting at Gladieux Meadows at 6 pm. Hosts and Associate Members will be needed 15 minutes early to prepare for the receiving line.
- \* Share seating at dinner with the Associate Member and his or her spouse or guest.
- \* New members to date include Drs. Garrett A. Begeman, Charles C. Church, Bhupinder S. Chahal, Gregory C. Downing, Gary N. Fox, Matthew H. Greenspan, Crystal R. Hill, Claudel D. Jean-Pierre, Mamon Maiteh, Albert E. Payne, Steven F. Sands, Nasfat Shehadeh and Subhash Thakur.

Please contact Lee Wealton, Academy Executive Director, at 419-473-3206 or at lwealton@aol.com to serve on the Host Committee. Please help us welcome our new physicians to The Academy and make the Annual Meeting a memorable experience for them.

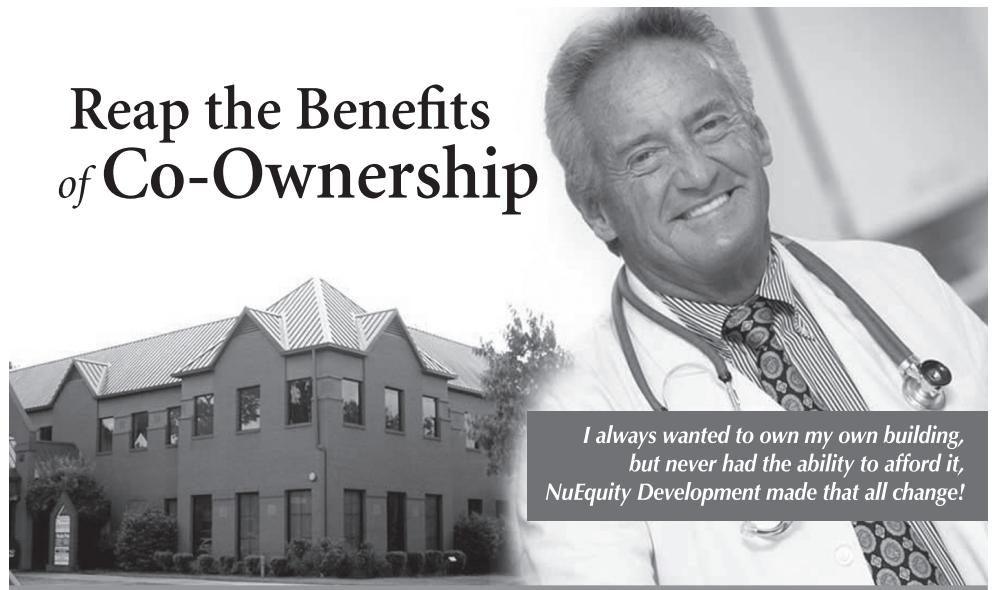
Salvador E. Peron, MD  
Academy President

## Regarding 2011 AMA Membership Dues

For 2011, your AMA membership dues will be billed by the AMA, not through The Academy or the OSMA. Watch your mailbox for your 2011 AMA dues invoice. Your prompt payment will ensure your access to all AMA member benefits and will support continued efforts to create a better health care system for all. Call AMA Member Relations at (800) 262-3211 or visit [www.ama-assn.org](http://www.ama-assn.org) to join the AMA or renew your membership today.

## Submit an Article to *Healthy Living News*

The Community Relations & Communications Commission is recruiting contributors to The Academy Corner in *Healthy Living News*. Articles for the monthly publication are approximately 300 words and can be sent to Dr. Ron Shapiro at [rshapiro@edok.com](mailto:rshapiro@edok.com). Maintaining the presence of *The Academy Corner* in *Healthy Living News* favorably keeps The Academy of Medicine in the public eye, as well as its members.



**Reap the Benefits of Co-Ownership**

*I always wanted to own my own building, but never had the ability to afford it, NuEquity Development made that all change!*

NuEquity Development, LLC is one of the largest, fastest-growing, privately-held medical office space providers. We specialize in leasing suitable office space and offering co-owned prime medical office buildings in premier locations.

Our combined 40 years of medical real estate experience helps medical professionals secure optimum buildings and locations for their successful medical practices and reap the benefits of leasing or co-ownership.

- ◆ turn-key
- ◆ location
- ◆ design
- ◆ construction
- ◆ property management
- ◆ leasing



419.466.3720/Don Helvey, principal [www.nuequitydevelopment.com](http://www.nuequitydevelopment.com)

## EHR Assistance Available to Providers in Northwest Ohio

In February 2009 Congress passed the American Recovery and Reinvestment Act (ARRA) designed to provide financial stimulus for the lagging economy. The stimulus bill makes funding available to entities assisting Priority Primary Care Providers (PPCP - Family Medicine Practitioners, Pediatricians, OBGYNs and Nurse Practitioners with prescription writing privileges) adopt, implement or upgrade technology for creation of an electronic health record (EHR).

To help move Ohio forward in the adoption of healthcare technology, Governor Strickland designated the Ohio Health Information Partnership (OHIP), a private-public partnership, as the recognized state entity responsible for this transformation. As a result, OHIP has selected the Hospital Council of Northwest Ohio to serve as the home for the Northwest Ohio Regional Extension Center (NWOREC) to implement an education

and assistance program on the use of Electronic Health Records (EHRs). OHIP for its part will provide the NWOREC with funding to assist up to 639 PPCPs in 14 counties in northwest Ohio. Funding for OHIP and the NWOREC is made available through the Office of the National Coordinator, Department of Health and Human Services, grant number 90RC0012/01. Other providers such as specialists, dentists and optometrists can receive the same NWOREC services at a minimal cost to their practice.

The NWOREC provides local support and consulting expertise to qualifying PPCPs to assist physician practices select and implement an electronic health records system and achieve meaningful use. Once physicians have achieved stage one meaningful use they will qualify for Medicare or Medicaid payments up to \$63,750 per physician to help offset the cost of EHR implementation.

The Northwest Ohio Regional Extension Center is well positioned with experienced associates to assist physician practices with their EHR decisions. The NWOREC will also connect physicians to

the preferred state EHR vendors and special financing options. The five preferred EHR vendors selected by OHIP include: Allscripts Professional; eClinicalWorks Unified EMR/PM Solution version 8; e-MDs Solution Series 6.3.0; Next Gen Healthcare EHR; and Sage Intergy suite 6.0. However, providers are not required to use these five vendors.

According to a June 2008 *New England Journal of Medicine* survey of nearly 3,000 physicians, only 17% are using EHRs. EHRs represent a significant capital investment that can be time consuming and disruptive to implement. The experience the Northwest Ohio Regional Extension Center will provide will help minimize potential disruptions to practice operations.

For more information or to get involved in this program, please contact Stacie Kreinbrink, Director of Services, NWOREC, (419) 842-0800, skreinbrink@hcno.org or Bill Mitchin, Lead Liaison, (614) 848-6533, wmitchin@isthmusltd.com. For information on EHR from the OSMA, contact Dave Owens at 1-800-766-6762 or dowens@osma.org.

### SEND HOLIDAY GREETINGS TO YOUR COLLEAGUES

**W**ant a convenient way to say happy holidays to your colleagues while helping The Academy of Medicine's Foundation Fund? All you have to do is fill out this form and send it to The Academy with your donation to the Foundation Fund. The Foundation Fund supports many worthwhile activities, including scholarships to medical students at The University of Toledo College of Medicine. Donations in lieu of holiday cards will be acknowledged in the December *Communiqué*.

Please PRINT Names

\_\_\_\_\_

Amount \_\_\_\_\_ From \_\_\_\_\_

Please make checks payable to The Academy of Medicine Foundation Fund, and send to The Academy of Medicine, 4428 Secor Road, Toledo, OH 43623. PLEASE RETURN BY DECEMBER 1!